

Sample: 1706SQA0084.3455

CLIENT INFORMATION

CLIENT ID:	Floracy
DATE SUBMITTED:	06/16/2017

SAMPLE INFORMATION

NAME:	S268EC
DATE REPORTED:	06/20/2017

POTENCY ANALYSIS

d9-THC 3.32%	+ d8-THC <LOQ	+ THCa <LOQ	=	Total THC 3.32%
CBD 69.39%	+ CBDa 1.37%		=	Total CBD 70.76%
CBG 1.65%	+ CBGa <LOQ	+ CBN <LOQ	=	Other Cannabinoids 1.65%
Other Matter 24.27%	Moisture Content NT	Total * Potential THC 3.32%	Total ** Potential CBD 70.60%	Total Cannabinoids 75.73%

*Total Potential THC = THCa x 0.877 + D9-THC

**Total Potential CBD = CBDa x 0.877 + CBD

TERPENE ANALYSIS

α Pinene	α Bisabolol	α Humulene	α Terpinene	β Caryophyllene
Camphene	Carene	p Cymene	Geraniol	Guaiol
Isopulegol	Limonene	Linalool	Myrcene	Nerolidol
Ocimene	B Pinene	γ Terpinene	Terpinolene	Total Terpenoids 0.0

Terpenes in mg/g

PESTICIDE

TOTAL PPM	
-----------	--

R. S. A.

TOTAL PPM	
-----------	--

MICROBIO

APC	
MOLD/YEAST	

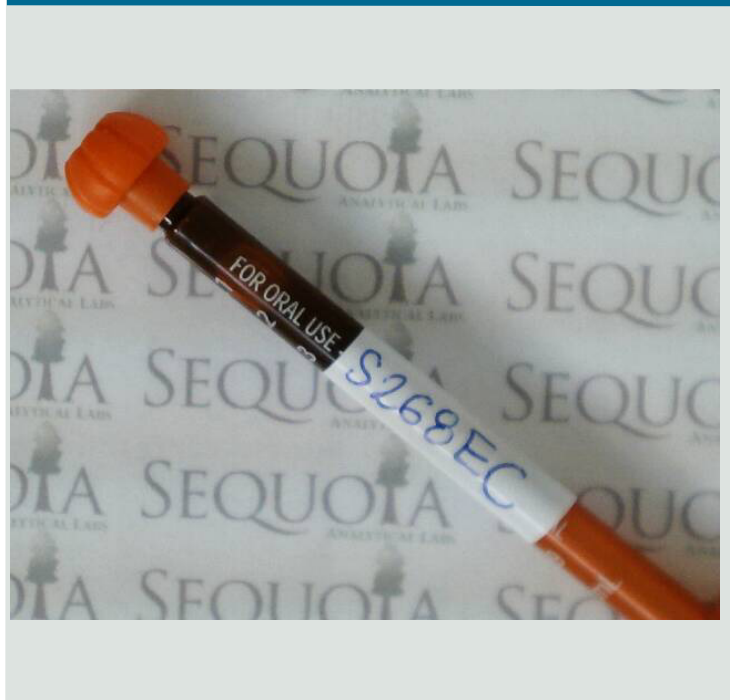
Results reported in colony-forming units (cfu) per milliliter

To determine specific molds, such as e. coli or salmonella additional testing is needed. Please contact the lab if you would like to identify any molds found

F. M. I.

INSECTS	
MITES	
MOLD	
OTHER	

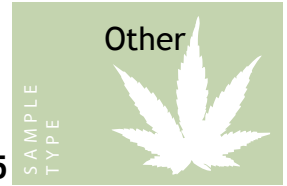
SUBMITTED SAMPLE



NOTES

We guarantee these results were run with the set standards that we have developed at Sequoia Analytical Labs. For more information about these standards please refer to our website or contact us at the lab. These results are for informational purposes only. Sequoia shall not be liable for any misrepresentation and can only discuss results with the submitting party. Results expire 90 days after date reported.





Sample: 1706SQA0084.3455

CLIENT INFORMATION

CLIENT ID:	Floracy
SUBMISSION DATE:	06/16/2017

SAMPLE INFORMATION

STRAIN NAME:	S268EC
DATE REPORTED:	06/20/2017

RESIDUAL SOLVENT ANALYSIS

SOLVENT	PPM	SAFE LEVEL*
ACETONE		
ACETONITRILE		
BUTANE		
ETHANOL		
HEPTANE		
HEXANE		
ISOBUTANE		
ISOPENTANE		
ISOPROPANOL		
METHANOL		
PENTANE		
PROPANE		
TOTAL PPM =		

Different entities have different safety limits. Do your research.
 *California has not yet set a statewide safety limit for residual solvents. Our results are based on USP 30 Chap 467 of the US Pharmacopoeia and will change when California sets limits.

ADVANCED PESTICIDE ANALYSIS

RESIDUE	PPM	SAFETY LIMIT
CARBARYL		
CARBOFURAN		
CHLORATRANILIPROLE		
CLOFENTEZINE		
DAMINOZIDE		
FENOXYCARB		
IMAZALIL		
MYCLOBUTANIL		
PACLOBUTRAZOL		
PROPICONAZOLE		
TEBUCONAZOLE		
PROPOXUR		
TOTAL PPM =		

Different entities have different safety limits. Do your research.
 *California has not yet set a statewide safety limit for pesticides. Our results are based on OHA PHD and will change when California sets limits.

FOREIGN MATTER INSPECTION



MICROBIOLOGICAL

MOLD YEAST		GENERAL APC
E. COLI	'SGS' SCORE*	SALMONELLA
PSEUDOMONAS		COLIFORM